



Missouri and the Big Goal

Dewayne Matthews

Lumina Foundation for Education

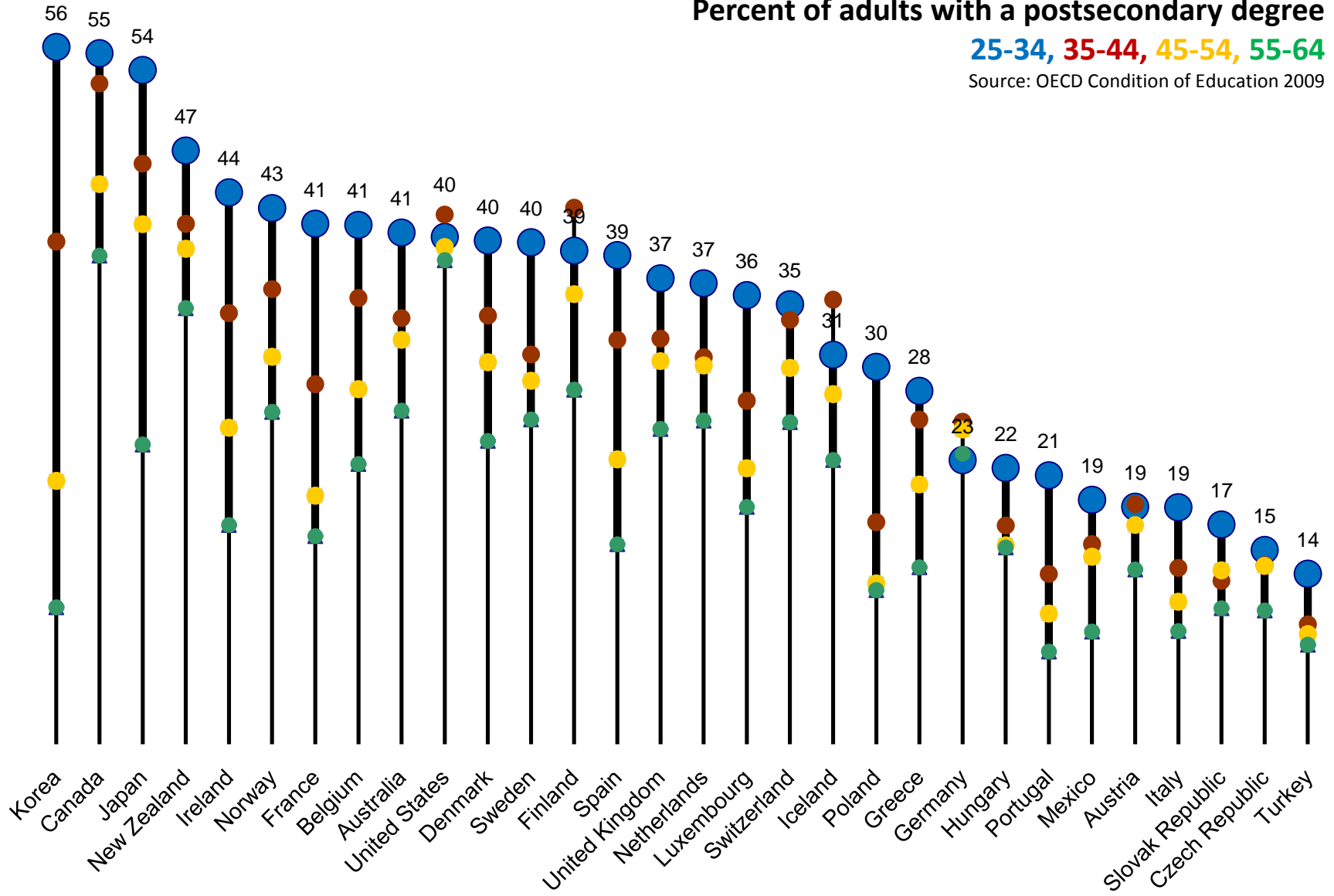
The big goal:

To increase the proportion of Americans with **high-quality degrees and credentials** to **60 percent** by the year **2025**.

Percent of adults with a postsecondary degree

25-34, 35-44, 45-54, 55-64

Source: OECD Condition of Education 2009



US states
25 to 34 year olds

Massachusetts
 Minnesota
 North Dakota
 Connecticut/Colorado/New York
 New Jersey/Vermont/New Hampshire
 Illinois/Maryland/Nebraska
 Virginia/Iowa
 Wisconsin/RI/SD/WA
 Pennsylvania/Kansas/Delaware
 Hawaii
 Utah/Montana
 Missouri
 Michigan/North Carolina/Georgia
 OH/OR/WY/CA/FL/ME
 Indiana
 Idaho/South Carolina/Arizona
 Texas/Alabama/Tennessee/Alaska
 Oklahoma
 Kentucky/New Mexico
 Mississippi/Louisiana
 West Virginia/Arkansas
 Nevada

54
 52
 50
 48
 46
 44
 42
 40
 38
 36
 34
 32
 30
 28
 26
 24
 22

Korea
 Canada
 Japan
 New Zealand
 Ireland
 Norway
 France/Belgium/Australia
United States/Denmark/Sweden
 Finland/Spain
 UK/Netherlands
 Luxembourg
 Switzerland
 Iceland
 Poland
 Greece
 Germany
 Hungary/
 Portugal
 Mexico



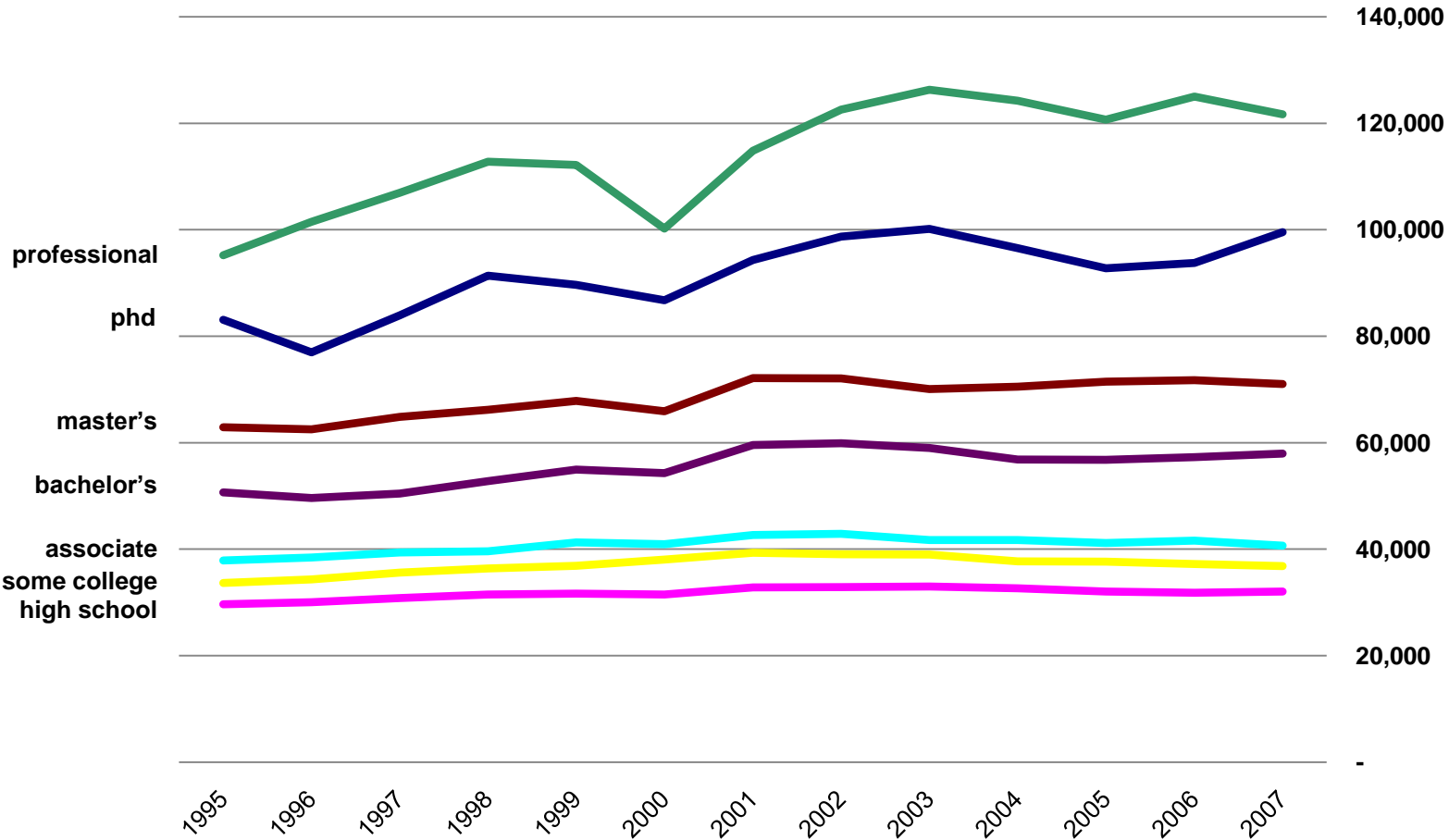
Missouri counties

25 to 34 years old

	64	
	60	
Boone	56	Korea
St. Charles		Canada
Adair	52	Japan
Platte/St. Louis		
	48	New Zealand
	44	Ireland
Christian/Clay		Norway
	40	France/Belgium/Australia
Cole		United States/Denmark/Sweden
St. Louis city/Greene	36	Finland/Spain
	32	UK/Netherlands
	28	Luxembourg
	24	Switzerland
	20	Iceland
Laclede/Crawford		Poland
Henry/Audrain	16	Greece
Barry		Germany
Texas/Washington	12	Hungary/Portugal
Stone		Mexico
McDonald	8	
Miller		

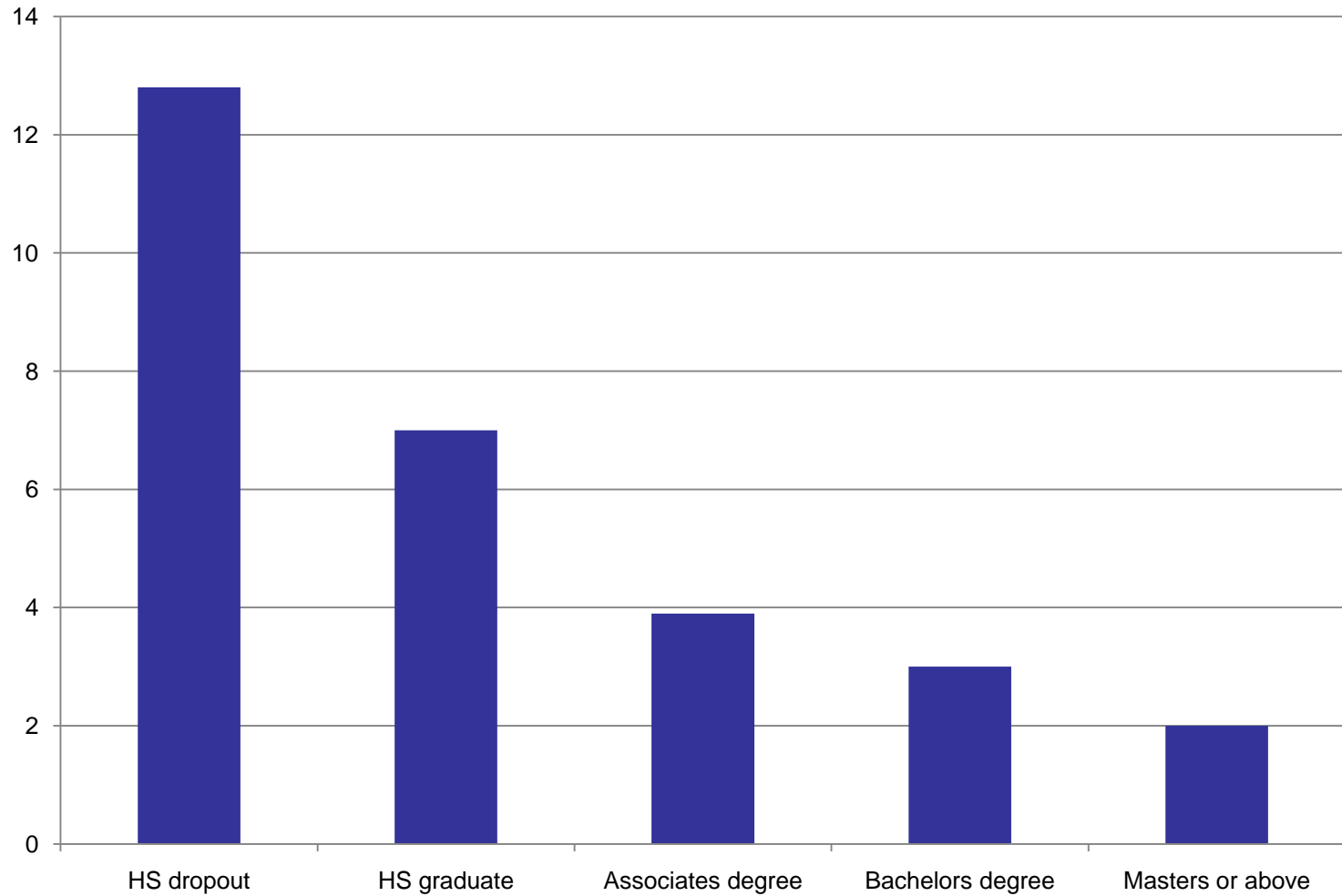
Income by level of education

Source: US Census, Current Population Survey



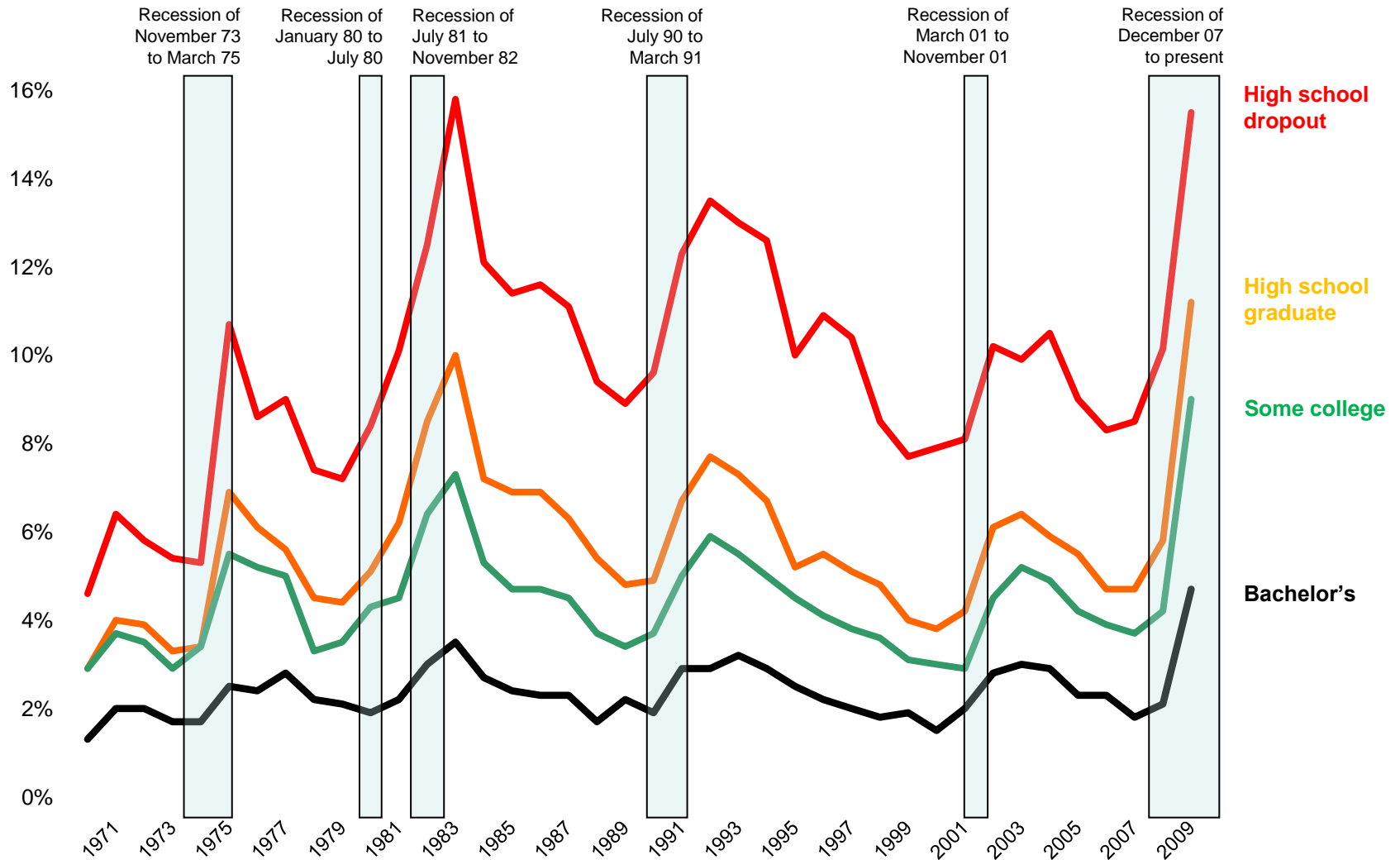
Unemployment by level of education

Source: Bureau of Labor Statistics, 2008



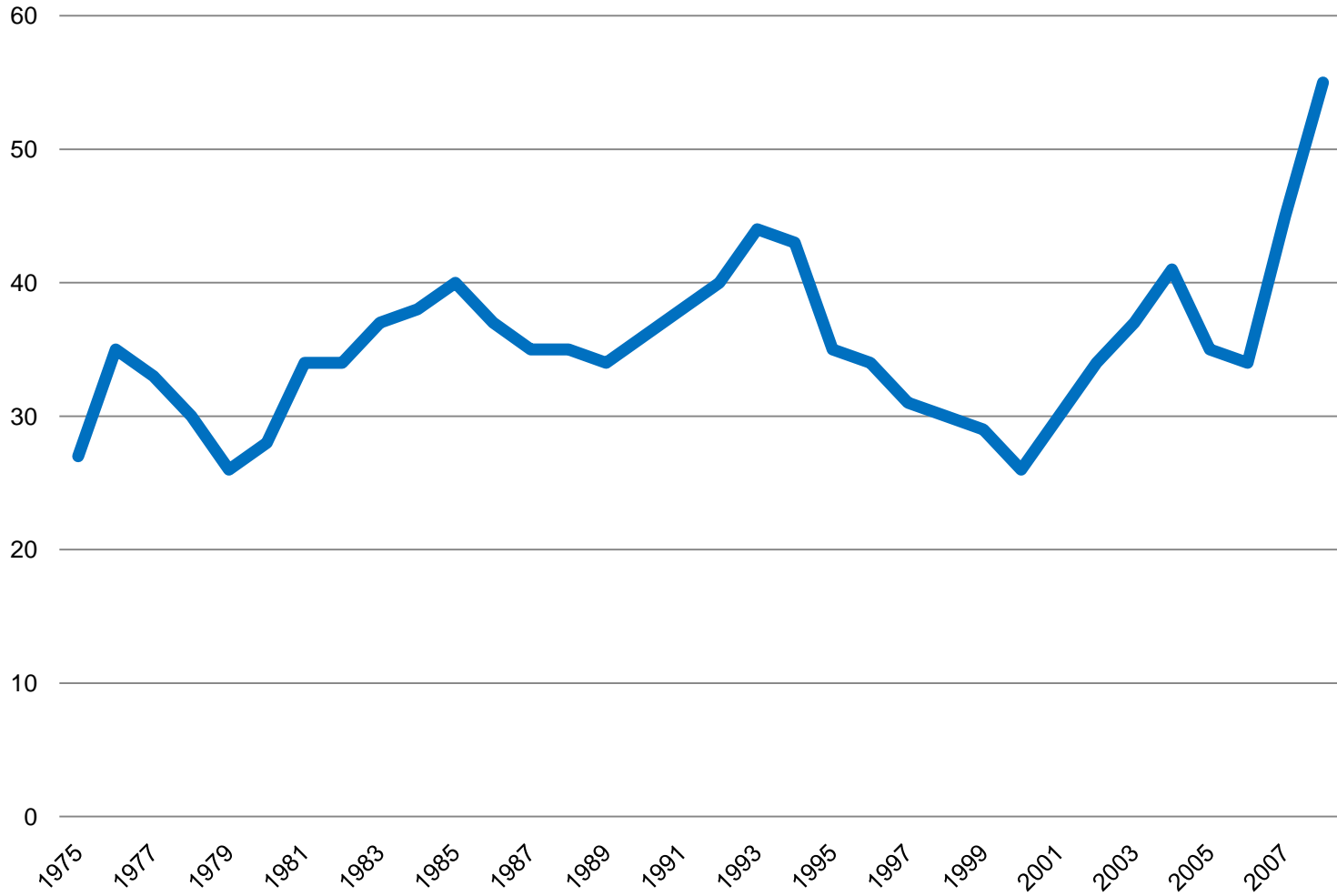
Unemployment by level of education

Source: US Census, Current Population Survey



Percent of layoffs that are permanent

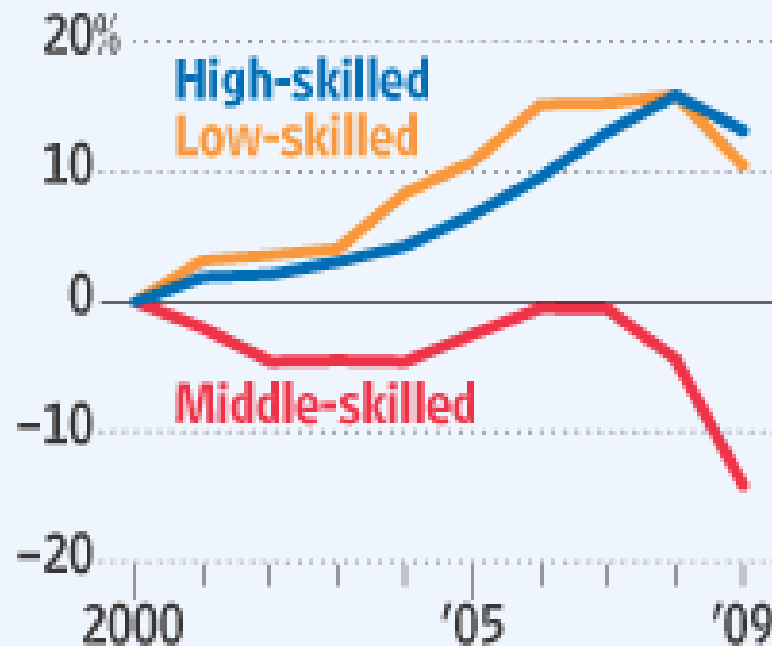
Source: Bureau of Labor Statistics, CNBC



Stuck in the Middle

The recession has accelerated a longer-term decline in middle-skilled, middle-wage jobs.

Cumulative change in employment since 2000, by skill level



Sources: David Autor, MIT; Labor Dept.

Between 2008 and 2018, new jobs in Missouri requiring postsecondary education and training will grow by 86,000 while jobs for high school graduates and dropouts will grow by 34,000.

Between 2008 and 2018, Missouri will create 898,000 job vacancies both from new jobs and from job openings due to retirement.

523,000 of these job vacancies will be for those with postsecondary credentials, 287,000 for high school graduates and 88,000 for high school dropouts.

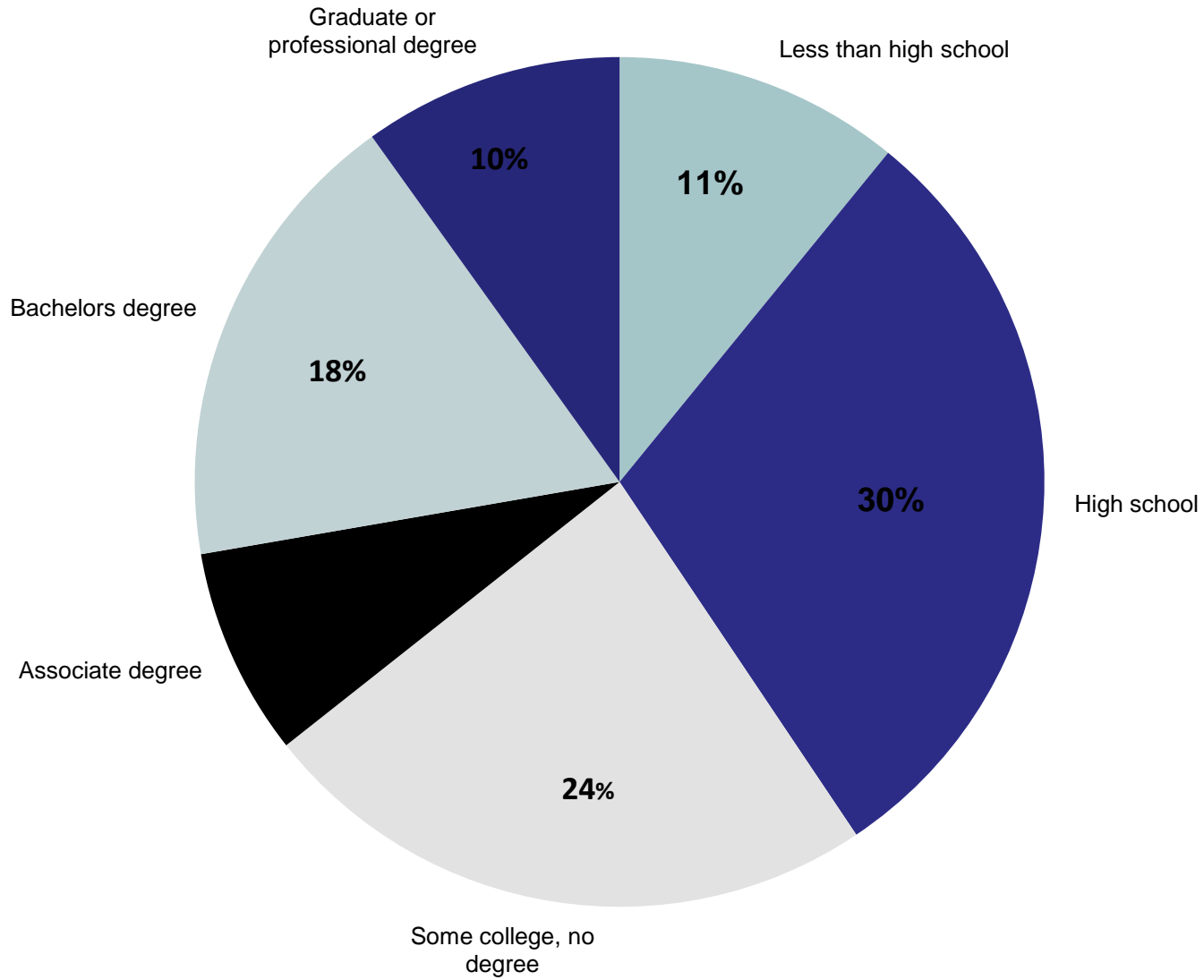
59% of all jobs in Missouri (1.8 million jobs) will require some postsecondary training beyond high school in 2018.

Source: **Help Wanted: Projections of Jobs and Education Requirements Through 2018**
The Georgetown University Center on Education and the Workforce

Reaching 60% attainment in Missouri

Current % of college graduates (25 to 64)	34.9%
Additional degrees needed to reach 60%	461,886
Current annual production of degrees	50,181

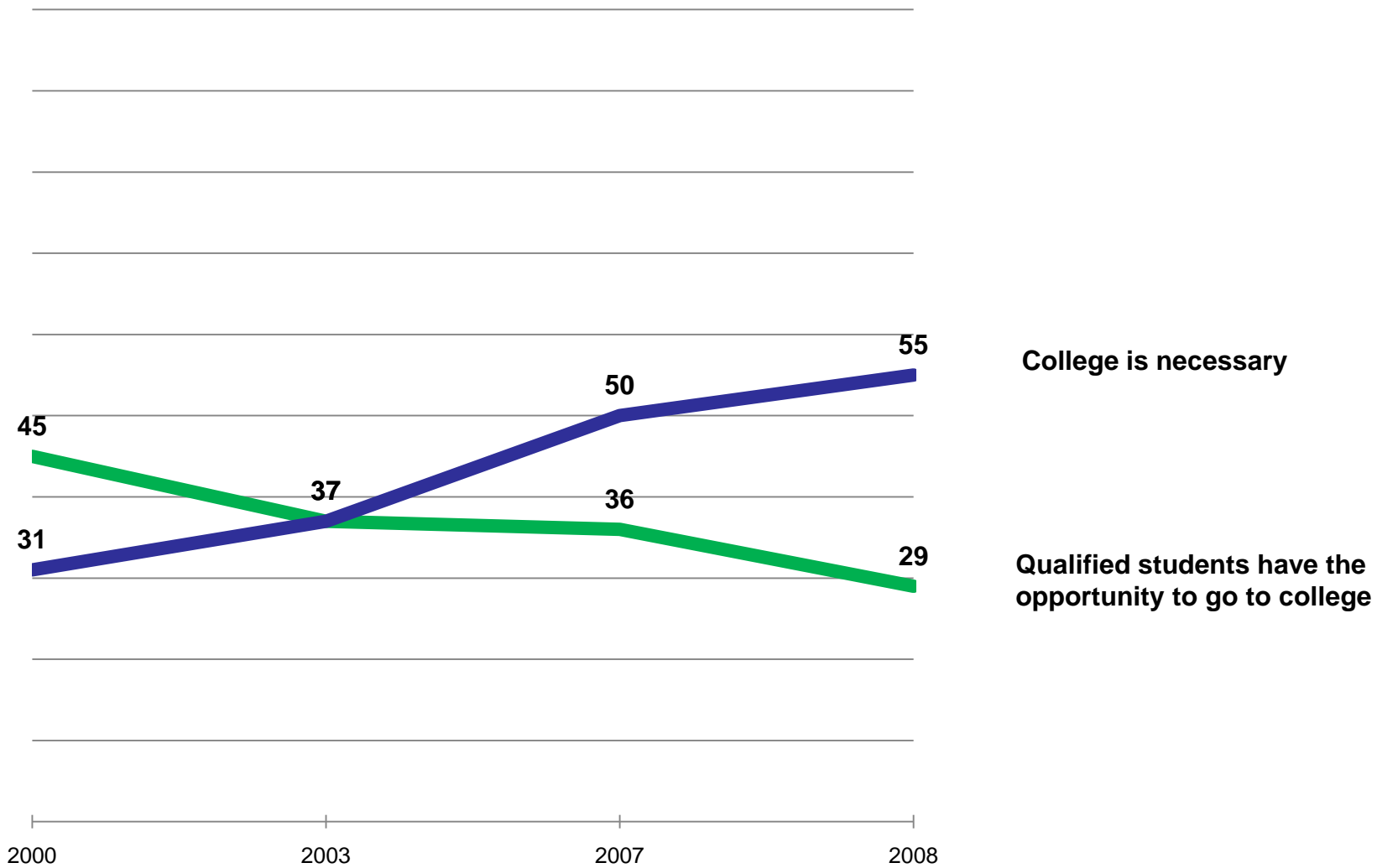
Annual increase needed	3,396
-------------------------------	--------------



In Missouri, 747,000 working-age adults have attended college but don't have a degree.



Lumina defines **high-quality credentials** as degrees and certificates that have **well-defined and transparent learning outcomes** which provide **clear pathways to further education and employment.**



Source: Public Agenda and National Center for Public Policy and Higher Education



www.luminafoundation.org

dmatthews@luminafoundation.org